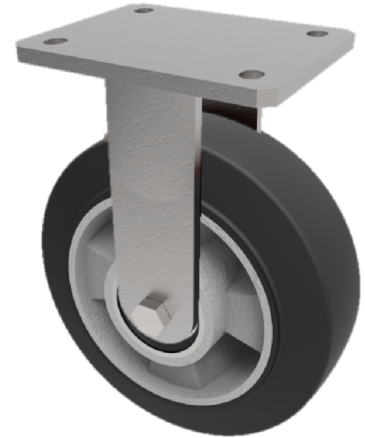


## Elastic Rubber on Aluminium Plate Fixed Castor 125mm 270kg Load

**Product code: BZKFL125ERBJ**

Fabricated fixed castor with a top plate fixing fitted with a black high elastic natural 65 shore A rubber tyre with aluminium centre wheel with ball bearings. Wheel diameter 125mm, tread width 50mm, overall height 165mm, top plate 138mm x 110mm, hole centres 105mm x 80mm. Load capacity 270kg. REACH compliant also PAH-Free rubber to confirm to EU-directive 2005/69/EC



Diameter (mm)	125
Fixing Option	Plate
Castor Type	Fixed
Bearing Type	Ball
Height (mm)	165
Plate Size (mm)	138 x 110
Hole Centres (mm)	105 x 80/75
To Suit Fixing Bolt (mm)	10
Wheel Material	Rubber on Aluminium
Colour / Shore Hardness	Black Elastic Rubber on Aluminium Rim / 65 Shore A
Temperature Resistance	-30 °C TO +80 °C
Top Plate Thickness (mm)	7.5
Fork Thickness (mm)	6
Load Capacity (kg)	270
Tread (mm)	50

### BIL GROUP LTD

Porte Marsh Road, Calne, Wiltshire, SN11 9BW

Registered in England No: 2603821

VAT Reg: GB572705729

