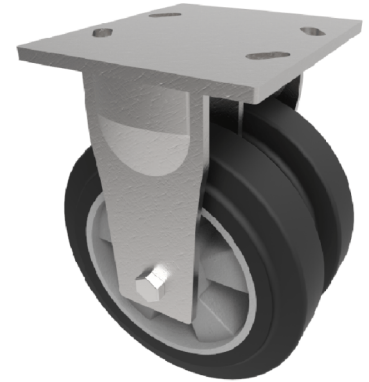


Elastic Rubber on Aluminium Plate Fixed Castor 125mm 540kg Load

Product code: 2BZKF125ERBJ

Twin-wheeled fabricated swivel castor with a top plate fixing fitted with 2 X Black high elastic natural 65 shore A rubber tyre on aluminium centred wheel with ball bearings. Wheel diameter 125mm, tread width 50mm, overall height 175mm, top plate 150mm x 110mm, hole centers 105mm x 80mm or 121mm x 59mm. Load capacity 540kg.



Diameter (mm)	125
Fixing Option	Plate
Castor Type	Fixed
Bearing Type	Ball
Plate Size (mm)	175 x 150
Hole Centres (mm)	105/121 x 80/59
Height (mm)	177
To Suit Fixing Bolt (mm)	12
Wheel Material	Rubber on Aluminium
Colour / Shore Hardness	Black Elastic Rubber on Aluminium Rim / 65 Shore A
Temperature Resistance	"-30 °C TO +80 °C
Tread (mm)	2 x 50
Load Capacity (kg)	540
Top Plate Thickness (mm)	7.5
Fork Thickness (mm)	6

BIL GROUP LTD

Porte Marsh Road, Calne, Wiltshire, SN11 9BW

Registered in England No: 2603821

VAT Reg: GB572705729

