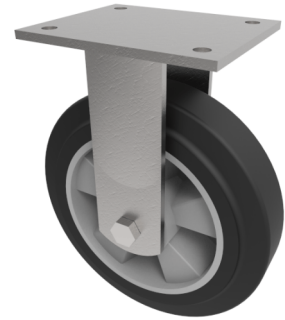


Elastic Rubber on Aluminium Plate Fixed Castor 160mm 400kg Load

Product code: BZSABF160ERBJ



Fabricated zinc plated fixed castor with plate fixing fitted with a black elastic rubber tyre aluminium centred wheel centred wheel with ball bearings. Wheel diameter 160mm, tread width 50mm, overall height 205mm, plate size 138mm x 110mm, hole centres 105mm x 80mm/75mm. Load capacity 400kg at 4kph and 160 at 10kph ** FOR INTERNAL AND EXTERNAL TOWING USE **

Diameter (mm)	160
Fixing Option	Plate
Castor Type	Fixed
Bearing Type	Ball
Height (mm)	205
Plate Size (mm)	138 x 110
Hole Centres (mm)	105 x 80
To Suit Fixing Bolt (mm)	10
Wheel Material	Rubber on Aluminium
Colour / Shore Hardness	Black Elastic Rubber on Aluminium Rim / 65 Shore A
Temperature Resistance	-30 °C TO +80 °C
Top Plate Thickness (mm)	8
Fork Thickness (mm)	6
Load Capacity (kg)	400
Tread (mm)	50