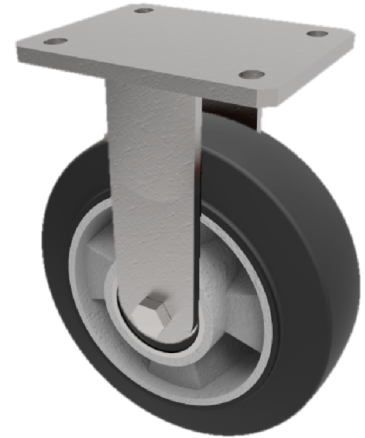


Elastic Rubber on Aluminium Plate Fixed Castor 160mm 400kg Load

Product code: BZMJF160ERBJ

Fabricated white zinc ROHS plated fixed castor with top plate fixing fitted with a black high elastic natural 65 shore A rubber tyred wheel on aluminium centre with ball bearing. Wheel diameter 160mm, tread width 50mm, overall height 195mm, plate size 138mm x 110mm, hole centres 105mm x 80mm/75mm. Load capacity 400kg and 160kg at 4kph REACH compliant also PAH-Free rubber to confirm to EU-directive 2005/69/EC ** FOR INTERNAL TOWING USE ONLY **



| | |
|--------------------------|--|
| Diameter (mm) | 160 |
| Fixing Option | Plate |
| Castor Type | Fixed |
| Bearing Type | Ball |
| Height (mm) | 195 |
| Plate Size (mm) | 138 x 110 |
| Hole Centres (mm) | 105 x 80/75 |
| To Suit Fixing Bolt (mm) | 10 |
| Wheel Material | Rubber on Aluminium |
| Colour / Shore Hardness | Black Elastic Rubber on Aluminium Rim / 65 Shore A |
| Temperature Resistance | -30 °C TO +80 °C |
| Top Plate Thickness (mm) | 7 |
| Fork Thickness (mm) | 6 |
| Load Capacity (kg) | 400 |
| Tread (mm) | 50 |

BIL GROUP LTD

Porte Marsh Road, Calne, Wiltshire, SN11 9BW

Registered in England No: 2603821

VAT Reg: GB572705729

