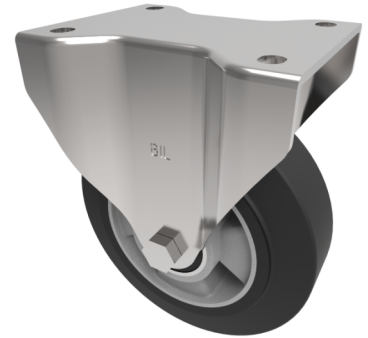


Elastic Rubber on Aluminium Plate Fixed Castor 160mm 400kg Load

Product code: BZPHF160ERBJ

Pressed steel fixed castor with a top plate fixing fitted with a black high elastic natural 65 shore A rubber tyred wheel aluminium centre with ball bearings. Wheel diameter 160mm, tread width 50mm, overall height 193mm, top plate 135mm x 110mm, hole centres 105mm x 80mm. Load capacity 400kg. REACH compliant also PAH-Free rubber to confirm to EU-directive 2005/69/EC



Diameter (mm)	160
Castor Type	Fixed
Fixing Option	Plate
Height (mm)	195
Wheel Material	Rubber on Aluminium
Colour / Shore Hardness	Black Elastic Rubber on Aluminium Rim / 65 Shore A
Temperature Resistance	-30 °C TO +80 °C
Bearing Type	Ball
Load Capacity (kg)	400
Tread (mm)	50
Plate Size (mm)	135 x 115
Hole Centres (mm)	105 x 80/75
Top Plate Thickness (mm)	4
Fork Thickness (mm)	4
To Suit Fixing Bolt (mm)	10

BIL GROUP LTD

Porte Marsh Road, Calne, Wiltshire, SN11 9BW

Registered in England No: 2603821

VAT Reg: GB572705729

