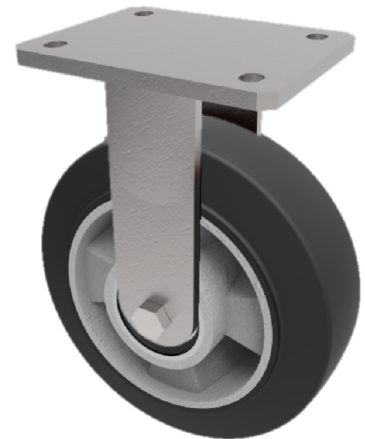


## Elastic Rubber on Aluminium Plate Fixed Castor 200mm 500kg Load

**Product code: BZKFL200ERBJ**

Fabricated fixed castor with a top plate fixing fitted with a black high elastic natural 65 shore A aluminium centred wheel with ball bearings. Wheel diameter 200mm, tread width 50mm, overall height 245mm, top plate 138mm x 110mm, hole centres 105mm x 80/75mm. Load capacity 500kg. NB the BIL catalogue is incorrect overall height is 245mm. REACH compliant also PAH-Free rubber to confirm to EU-directive 2005/69/EC



Diameter (mm)	200
Fixing Option	Plate
Castor Type	Fixed
Bearing Type	Ball
Height (mm)	245
Plate Size (mm)	138 x 110
Hole Centres (mm)	105 x 80/75
To Suit Fixing Bolt (mm)	10
Wheel Material	Rubber on Aluminium
Colour / Shore Hardness	Black Elastic Rubber on Aluminium Rim / 65 Shore A
Temperature Resistance	-30 °C TO +80 °C
Top Plate Thickness (mm)	7.5
Fork Thickness (mm)	6
Load Capacity (kg)	500
Tread (mm)	50