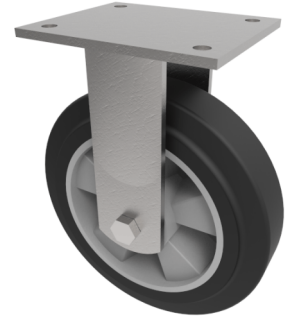


Elastic Rubber on Aluminium Plate Fixed Castor 250mm 650kg Load

Product code: BZSABF250ERBJ



Fabricated zinc plated fixed castor with plate fixing fitted with a black high elastic natural 65 shore A rubber tyred on an aluminium centred wheel with a ball bearing. Wheel diameter 250mm, tread width 50mm, overall height 300mm, plate size 138mm x 110mm, hole centres 105mm x 80mm/75mm. Load capacity 650kg at 4kph and 260kg at 10kph, ** FOR INTERNAL AND EXTERNAL TOWING USE **

Diameter (mm)	250
Fixing Option	Plate
Castor Type	Fixed
Bearing Type	Ball
Height (mm)	300
Plate Size (mm)	138 x 110
Hole Centres (mm)	105 x 80
To Suit Fixing Bolt (mm)	10
Wheel Material	Rubber on Aluminium
Colour / Shore Hardness	Black Elastic Rubber on Aluminium Rim / 65 Shore A
Temperature Resistance	-30 °C TO +80 °C
Top Plate Thickness (mm)	8
Fork Thickness (mm)	6
Load Capacity (kg)	650
Tread (mm)	50