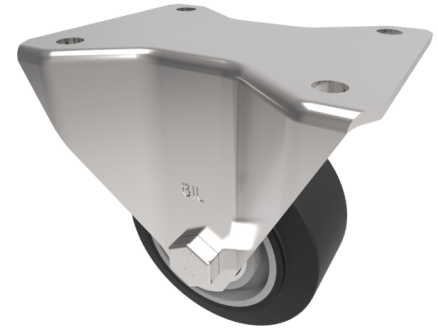


## Elastic Rubber on Aluminium Plate Fixed Castor 75mm 125kg Load

**Product code: BZHDF75ERBJ**



Pressed steel fixed castor with a top plate fixing fitted with a black 65 shore A elastic rubber tyre on aluminium centred centre with ball bearings. Wheel Diameter 75mm, Tread width 32mm, Overall height 108mm, Top plate 105mm x 86mm, hole centres 80mm x 60mm. Load capacity 125kg.

Diameter (mm)	75
Castor Type	Fixed
Fixing Option	Plate
Height (mm)	108
Wheel Material	Rubber on Aluminium
Colour / Shore Hardness	Black Elastic Rubber on Aluminium Rim / 65 Shore A
Temperature Resistance	-30 °C TO +80 °C
Bearing Type	Ball
Load Capacity (kg)	125
Tread (mm)	32
Plate Size (mm)	105 x 86
Hole Centres (mm)	80 X 60
Top Plate Thickness (mm)	4
Fork Thickness (mm)	4
To Suit Fixing Bolt (mm)	8

### BIL GROUP LTD

Porte Marsh Road, Calne, Wiltshire, SN11 9BW

Registered in England No: 2603821

VAT Reg: GB572705729

