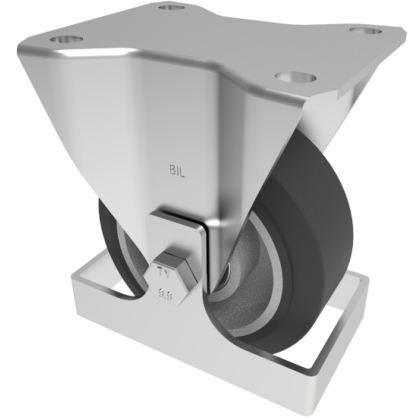


Elastic Rubber on Aluminium Plate Fixed Castor Footguard 125mm 250kg load

Product code: BZHF125ERBJFG

Pressed steel swivel castor with a top plate fixing with a black elastic rubber tyre wheel with a aluminium centre with ball bearing and footguard. Wheel diameter 125mm, tread width 40mm, overall height 156mm, top plate 105mm x 86mm, hole centres 80mm x 60mm. Load capacity 250kg.



Height (mm)	155
Tread (mm)	40
To Suit Fixing Bolt (mm)	8
Bearing Type	Ball
Diameter (mm)	125
Wheel Material	Rubber on Aluminium
Fixing Option	Plate
Castor Type	Fixed
Load Capacity (kg)	250
Colour / Shore Hardness	Black Elastic Rubber on Aluminium Rim / 65 Shore A
Plate Size (mm)	105 x 86
Hole Centres (mm)	80 X 60
Fork Thickness (mm)	4
Top Plate Thickness (mm)	4
Temperature Resistance	-30 °C TO +80 °C

BIL GROUP LTD

Porte Marsh Road, Calne, Wiltshire, SN11 9BW

Registered in England No: 2603821

VAT Reg: GB572705729

