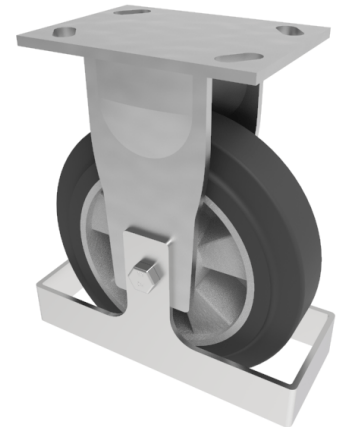


Elastic Rubber on Aluminium Plate Fixed Castor Footguard 200mm 500kg load

Product code: BZKF200ERBJFG

Fabricated fixed castor with a flat plate fixing fitted with a black high elastic natural 65 shore A rubber tyre on aluminium centre with ball bearing. Wheel diameter 200mm, tread width 50mm, overall height 250mm, plate size 150mm x 110mm, hole centres 105mm x 80mm or 121mm x 59mm. Load capacity 500kg at 4kph and 200kg at 10kph. REACH compliant also PAH-Free rubber to confirm to EU-directive 2005/69/EC



Height (mm)	250
Tread (mm)	50
To Suit Fixing Bolt (mm)	12
Bearing Type	Ball
Diameter (mm)	200
Wheel Material	Rubber on Aluminium
Fixing Option	Plate
Castor Type	Fixed
Load Capacity (kg)	500
Colour / Shore Hardness	Black Elastic Rubber on Aluminium Rim / 65 Shore A
Plate Size (mm)	150 x 110
Hole Centres (mm)	105/121 x 80/59
Fork Thickness (mm)	6
Top Plate Thickness (mm)	7.5
Temperature Resistance	-30 °C TO +80 °C