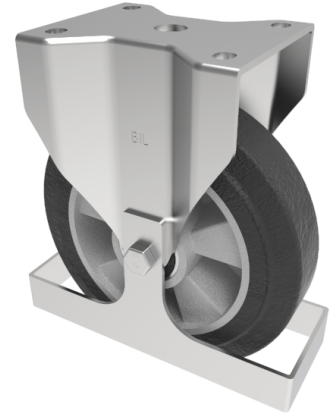


Elastic Rubber on Aluminium Plate Fixed Castor Footguard 200mm 500kg load

Product code: BZPHF200ERBJFG



Pressed steel fixed castor with a top plate fixing fitted with a black high elastic natural 65 shore A rubber tyre on an aluminium centred wheel with ball bearings and footguard. Wheel diameter 200mm, tread width 50mm, overall height 238mm, top plate 135mm x 110mm, hole centres 105mm x 80/75mm. Load capacity 500kg. REACH compliant also PAH-Free rubber to confirm to EU-directive 2005/69/EC

Height (mm)	238
Tread (mm)	50
To Suit Fixing Bolt (mm)	10
Bearing Type	Ball
Diameter (mm)	200
Wheel Material	Rubber on Aluminium
Fixing Option	Plate
Castor Type	Fixed
Load Capacity (kg)	500
Colour / Shore Hardness	Black Elastic Rubber on Aluminium Rim / 65 Shore A
Plate Size (mm)	135 x 110
Hole Centres (mm)	105 x 80/75
Fork Thickness (mm)	5
Top Plate Thickness (mm)	5
Temperature Resistance	-30 °C TO +80 °C

BIL GROUP LTD

Porte Marsh Road, Calne, Wiltshire, SN11 9BW

Registered in England No: 2603821

VAT Reg: GB572705729

