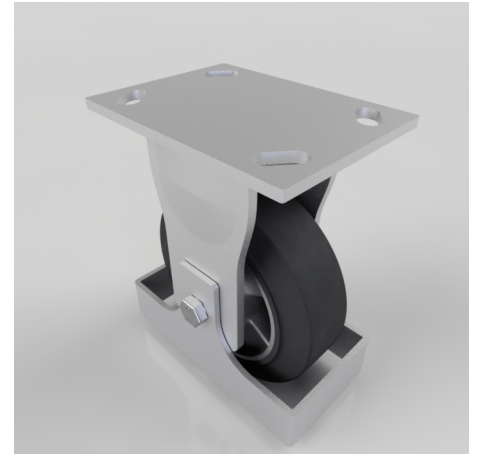


Elastic Rubber on Aluminium Plate Footguard 150mm 350kg load

Product code: BZKF150ERBJFG

Fabricated fixed castor with a top plate fixing fitted with a black elastic rubber tyred aluminium centred wheel with ball bearings and footguard. Wheel diameter 150mm, tread width 50mm, overall height 200mm, top plate 150mm x 110mm, hole centres 105mm x 80mm or 121mm x 59mm. Load capacity 350kg at 4kph and 140kg at 10kph



| | |
|--------------------------|--|
| Height (mm) | 200 |
| Tread (mm) | 50 |
| To Suit Fixing Bolt (mm) | 12 |
| Bearing Type | Ball |
| Diameter (mm) | 150 |
| Wheel Material | Rubber on Aluminium |
| Fixing Option | Plate |
| Castor Type | Fixed |
| Load Capacity (kg) | 350 |
| Colour / Shore Hardness | Black Elastic Rubber on Aluminium Rim / 65 Shore A |
| Plate Size (mm) | 150 x 110 |
| Hole Centres (mm) | 105/121 x 80/59 |
| Fork Thickness (mm) | 6 |
| Top Plate Thickness (mm) | 7.5 |
| Temperature Resistance | -30 °C TO +80 °C |