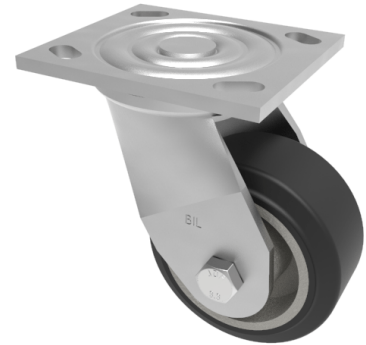


Elastic Rubber on Aluminium Plate Swivel Castor 125mm 270kg Load

Product code: BZJ125ERBJ/USA



Fabricated swivel castor with a top plate fixing fitted with a black high elastic natural 65 shore A rubber tyre with aluminium centre wheel with ball bearings. Wheel diameter 125mm, tread width 50mm, overall height 165mm, top plate 115mm x 102mm, hole centres 92mm x 67mm or 76mm x 76mm, load capacity 275kg. REACH compliant also PAH-Free rubber to confirm to EU-directive 2005/69/EC

Diameter (mm)	125
Fixing Option	Plate
Castor Type	Swivel
Bearing Type	Ball
Height (mm)	165
Plate Size (mm)	115 x 102
Hole Centres (mm)	76/92 x 76/67
To Suit Fixing Bolt (mm)	10
Wheel Material	Rubber on Aluminium
Colour / Shore Hardness	Black Elastic Rubber on Aluminium Rim / 65 Shore A
Temperature Resistance	-30 °C TO +80 °C
Top Plate Thickness (mm)	5.5
Fork Thickness (mm)	5.5
Swivel Radius (mm)	103
Load Capacity (kg)	270
Tread (mm)	50

BIL GROUP LTD

Porte Marsh Road, Calne, Wiltshire, SN11 9BW

Registered in England No: 2603821

VAT Reg: GB572705729

