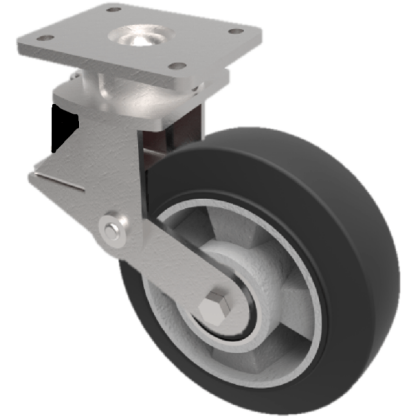


Elastic Rubber on Aluminium Plate Swivel Castor 160mm 200kg Load

Product code: BZKL160ERBJSPR200

Fabricated swivel castor with top plate fixing fitted with a 160mm x 50mm black high elastic natural 65 shore A rubber tyre aluminium centred wheel with ball bearings overall height 188mm/208mm, plate size 138mm x 110mm, hole centres 105mm x 80mm. fitted with a 200kg black rubber spring but load capacity is 200kg at 4kph and 140kg at 10kph. REACH compliant also PAH-Free rubber to confirm to EU-directive 2005/69/EC



Diameter (mm)	160
Fixing Option	Plate
Castor Type	Swivel
Bearing Type	Ball
Height (mm)	200
Plate Size (mm)	138 x 110
Hole Centres (mm)	105 x 80
To Suit Fixing Bolt (mm)	10
Wheel Material	Rubber on Aluminium
Colour / Shore Hardness	Black Elastic Rubber on Aluminium Rim / 65 Shore A
Temperature Resistance	-30 °C TO +80 °C
Top Plate Thickness (mm)	7.5
Fork Thickness (mm)	6
Swivel Radius (mm)	182
Load Capacity (kg)	200
Tread (mm)	50

BIL GROUP LTD

Porte Marsh Road, Calne, Wiltshire, SN11 9BW

Registered in England No: 2603821

VAT Reg: GB572705729