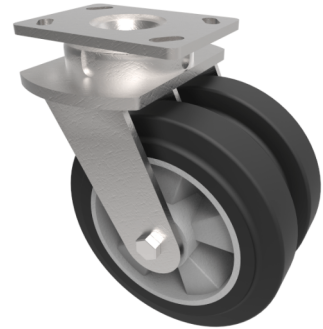


Elastic Rubber on Aluminium Plate Swivel Castor 200mm 1000kg Load

Product code: 2BZK200ERBJ



Fabricated swivel castor with a top plate fixing fitted with 2 x black 65 shore A elastic rubber tyre on aluminium centred wheels with ball bearings. Wheel diameter 200mm, tread width 50mm x 2, overall height 250mm, plate size 150mm x 110mm, hole centres 105mm x 80mm or 121mm x 59mm. Load capacity 1000kg. REACH compliant also PAH-Free rubber to confirm to EU-directive 2005/69/EC

| | |
|--------------------------|--|
| Diameter (mm) | 200 |
| Fixing Option | Plate |
| Castor Type | Swivel |
| Bearing Type | Ball |
| Plate Size (mm) | 150 x 110 |
| Hole Centres (mm) | 105/121 x 80/59 |
| Height (mm) | 250 |
| Swivel Radius (mm) | 170 |
| To Suit Fixing Bolt (mm) | 12 |
| Wheel Material | Rubber on Aluminium |
| Colour / Shore Hardness | Black Elastic Rubber on Aluminium Rim / 65 Shore A |
| Temperature Resistance | "-30 °C TO +80 °C |
| Tread (mm) | 2 x 50 |
| Load Capacity (kg) | 1000 |
| Top Plate Thickness (mm) | 7.5 |
| Fork Thickness (mm) | 6 |