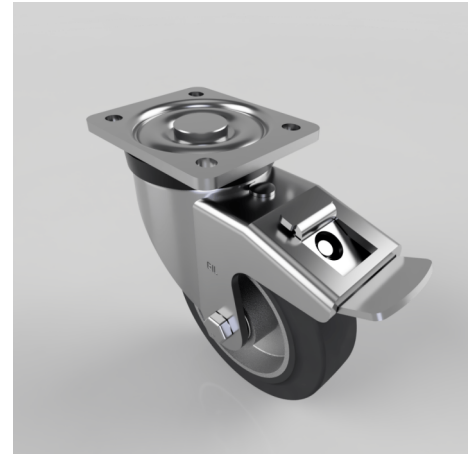


## Elastic Rubber on Aluminium Plate Swivel Castor Brake 125mm 250kg Load

**Product code: BZXP125ERBJSWB**

Pressed steel swivel castor with a top plate fixing fitted with a black high elastic 65 shore A rubber tyred wheel aluminium centre with ball bearings and a total lock brake. Wheel diameter 125mm, tread width 40mm, overall height 165mm, top plate 105mm x 86mm, hole centres 80mm x 60mm. Load capacity 250kg at 4kph and 100kg at 10kph. REACH compliant also PAH-Free rubber to confirm to EU-directive 2005/69/EC



|                          |  |
|--------------------------|--|
| Diameter (mm)            | 125  |
| Castor Type              | Swivel with Total Lock Brake                       |
| Fixing Option            | Plate  |
| Height (mm)              | 165  |
| Wheel Material           | Rubber on Aluminium                                |
| Colour / Shore Hardness  | Black Elastic Rubber on Aluminium Rim / 65 Shore A |
| Temperature Resistance   | -30 °C TO +80 °C                                   |
| Bearing Type             | Ball   |
| Load Capacity (kg)       | 250  |
| Tread (mm)               | 40   |
| Swivel Radius (mm)       | 135  |
| Plate Size (mm)          | 105 x 86   |
| Hole Centres (mm)        | 80 / 77 X 60                                       |
| Top Plate Thickness (mm) | 6  |
| Fork Thickness (mm)      | 5  |
| To Suit Fixing Bolt (mm) | 8  |

## BIL GROUP LTD

Porte Marsh Road, Calne, Wiltshire, SN11 9BW

Registered in England No: 2603821

VAT Reg: GB572705729

