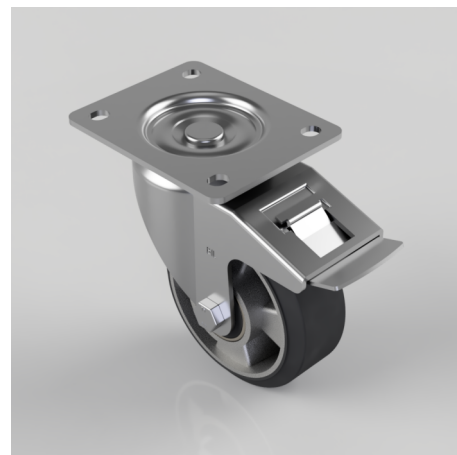


Elastic Rubber on Aluminium Plate Swivel Castor Brake 125mm 270kg Load

Product code: BZWH125ERBJSWBLP

Pressed steel swivel castor with a top plate fixing with a 65 shore A black elastic rubber tyred wheel with an aluminium centre with ball bearing and total lock brake. Wheel diameter 125mm, tread width 50mm, overall height 166mm, top plate 135mm x 110mm, hole centres 105mm x 80/75mm. Load capacity 275kg. REACH compliant also PAH-Free rubber to confirm to EU-directive 2005/69/EC



Diameter (mm)	125
Castor Type	Swivel with Total Lock Brake
Fixing Option	Plate
Height (mm)	166
Wheel Material	Rubber on Aluminium
Colour / Shore Hardness	Black Elastic Rubber on Aluminium Rim / 65 Shore A
Temperature Resistance	-30 °C TO +80 °C
Bearing Type	Ball
Load Capacity (kg)	270
Tread (mm)	50
Swivel Radius (mm)	138
Plate Size (mm)	135 x 110
Hole Centres (mm)	105 x 80/75
Top Plate Thickness (mm)	4
Fork Thickness (mm)	3.5
To Suit Fixing Bolt (mm)	10

BIL GROUP LTD

Porte Marsh Road, Calne, Wiltshire, SN11 9BW

Registered in England No: 2603821

VAT Reg: GB572705729

