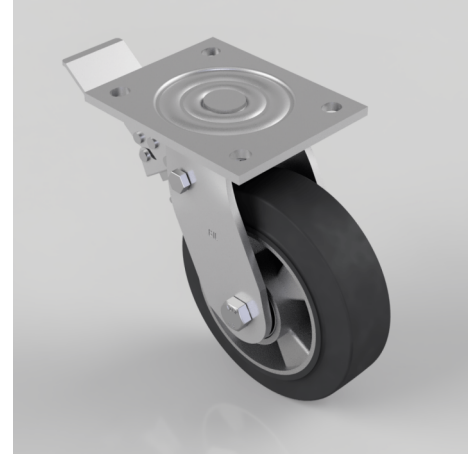


Elastic Rubber on Aluminium Plate Swivel Castor Brake 150mm 350kg Load

Product code: BZJ150ERBJSWB

Fabricated swivel castor with a top plate fixing fitted with a black high elastic natural 65 shore A rubber tyred aluminium centred wheel with ball bearings and a total lock brake. Wheel diameter 150mm, tread width 50mm, overall height 190mm, top plate 138mm x 110mm, hole centres 105mm x 80mm. Load capacity 350kg. REACH compliant also PAH-Free rubber to confirm to EU-directive 2005/69/EC



Diameter (mm)	150
Fixing Option	Plate
Castor Type	Swivel with Total Lock Brake
Bearing Type	Ball
Height (mm)	190
Plate Size (mm)	135 x 110
Hole Centres (mm)	105 x 80
To Suit Fixing Bolt (mm)	10
Wheel Material	Rubber on Aluminium
Colour / Shore Hardness	Black Elastic Rubber on Aluminium Rim / 65 Shore A
Temperature Resistance	-30 °C TO +80 °C
Top Plate Thickness (mm)	5.5
Fork Thickness (mm)	5.5
Swivel Radius (mm)	132
Load Capacity (kg)	350
Tread (mm)	50

BIL GROUP LTD

Porte Marsh Road, Calne, Wiltshire, SN11 9BW

Registered in England No: 2603821

VAT Reg: GB572705729

