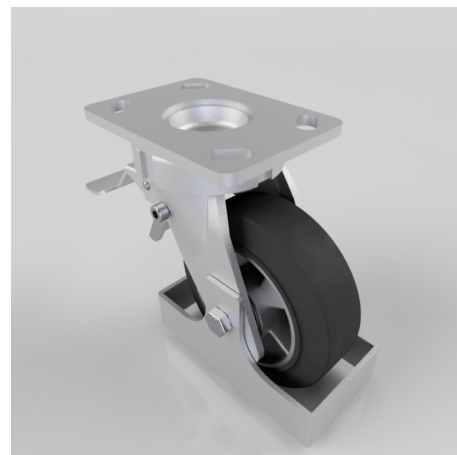


Elastic Rubber on Aluminium Plate Swivel Castor Brake Footguard 150mm 350kg load

Product code: BZK150ERBJSWBFG

Fabricated swivel castor with a top plate fixing fitted with a black elastic rubber tyred aluminium centred wheel with ball bearings, swivel wheel brake and footguard. Wheel diameter 150mm, tread width 50mm, overall height 200mm, top plate 150mm x 110mm, hole centres 105mm x 80mm or 121mm x 59mm. Load capacity 350kg at 4kph and 140kg at 10kph.



Height (mm)	200
Tread (mm)	50
To Suit Fixing Bolt (mm)	12
Bearing Type	Ball
Diameter (mm)	150
Wheel Material	Rubber on Aluminium
Fixing Option	Plate
Castor Type	Swivel with Total Lock Brake
Load Capacity (kg)	350
Colour / Shore Hardness	Black Elastic Rubber on Aluminium Rim / 65 Shore A
Swivel Radius (mm)	140
Plate Size (mm)	150 x 110
Hole Centres (mm)	105/121 x 80/59
Fork Thickness (mm)	6
Top Plate Thickness (mm)	7.5
Temperature Resistance	-30 °C TO +80 °C

BIL GROUP LTD

Porte Marsh Road, Calne, Wiltshire, SN11 9BW

Registered in England No: 2603821

VAT Reg: GB572705729

