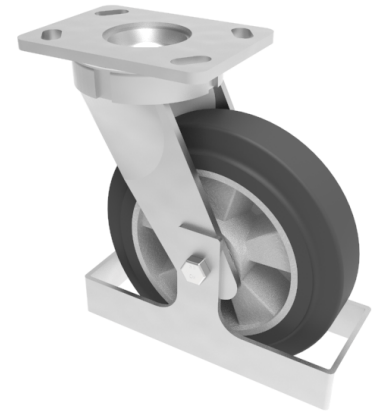


## Elastic Rubber on Aluminium Plate Swivel Castor Footguard 200mm 500kg load

**Product code: BZK200ERBJFG**

Fabricated swivel castor with a flat plate fixing fitted with a black high elastic natural 65 shore A rubber tyre on aluminium centred wheel with a ball bearing and footguard. Wheel diameter 200mm, tread width 50mm, overall height 250mm, plate size 150mm x 110mm, hole centres 105mm x 80mm or 121mm x 59mm. Load capacity 500kg at 4kph and 200kg at 10kph. REACH compliant also PAH-Free rubber to confirm to EU-directive 2005/69/EC



Height (mm)	250
Tread (mm)	50
To Suit Fixing Bolt (mm)	12
Bearing Type	Ball
Diameter (mm)	200
Wheel Material	Rubber on Aluminium
Fixing Option	Plate
Castor Type	Swivel
Load Capacity (kg)	500
Colour / Shore Hardness	Black Elastic Rubber on Aluminium Rim / 65 Shore A
Swivel Radius (mm)	165
Plate Size (mm)	150 x 110
Hole Centres (mm)	105/121 x 80/59
Fork Thickness (mm)	6
Top Plate Thickness (mm)	7.5
Temperature Resistance	-30 °C TO +80 °C

### BIL GROUP LTD

Porte Marsh Road, Calne, Wiltshire, SN11 9BW

Registered in England No: 2603821

VAT Reg: GB572705729

