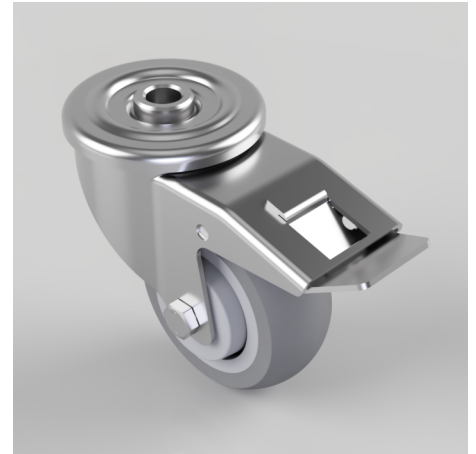


Elastic Rubber on Nylon Bolt Hole Stainless Steel Swivel Castor Brake 80mm 70kg Load

Product code: V82Q080GNJB12

Stainless steel swivel castor with a 12mm bolt hole fixing fitted with grey elastic rubber on nylon centred wheel with ball journal bearing and total lock brake. Wheel diameter 80mm, tread width 32mm, overall height 108mm. Load capacity 70kg.



Diameter (mm)	80
Castor Type	Swivel with Total Lock Brake
Fixing Option	Bolt Hole
Height (mm)	108
Wheel Material	Rubber on Nylon
Colour / Shore Hardness	Grey Elastic Rubber Tyre on Nylon Rim with Grey Threadguard / 65±5 Shore A
Temperature Resistance	-5°C to 60°C
Bearing Type	Ball
Load Capacity (kg)	70
Tread width (mm)	32
Swivel Radius (mm)	110
Head Dia (mm)	74
To Suit Fixing Bolt (mm)	12
Fork Thickness (mm)	2
Brand	Varley

BIL GROUP LTD

Porte Marsh Road, Calne, Wiltshire, SN11 9BW

Registered in England No: 2603821

VAT Reg: GB572705729

