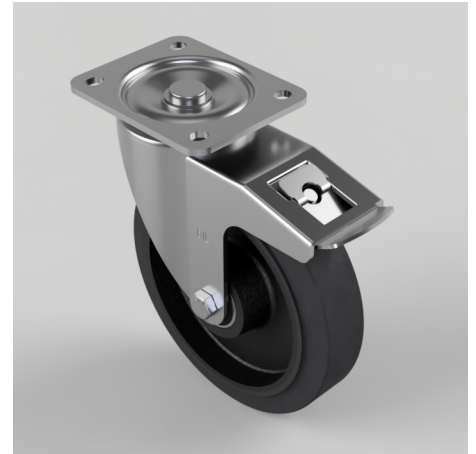


## Elastic Speed Rubber on Cast Iron Plate Swivel Castor Brake 200mm 500kg Load

**Product code: BZSPH200CUBJSWB**

Pressed steel swivel castor with a top plate fixing fitted with a black 65 shore A elastic rubber tyred on cast iron centre with ball bearings and a total lock brake. Wheel diameter 200mm, tread width 50mm, overall height 238mm, top plate 135mm x 110mm, hole centres 105mm x 80/75mm and a Load capacity of 500kg at 4kph, 200kg at 10kph, 185kg at 16kph and 175kg at 20kph. REACH compliant also PAH-Free rubber to confirm to EU-directive 2005/69/EC **\*\*FOR INTERNAL TOWING ONLY\*\***



Diameter (mm)	200
Castor Type	Swivel with Total Lock Brake
Fixing Option	Plate
Height (mm)	238
Wheel Material	Rubber on Cast Iron
Colour / Shore Hardness	Black Elastic Rubber on Cast Iron Rim / 65 Shore A
Temperature Resistance	-20 °C TO +60 °C
Bearing Type	Ball
Load Capacity (kg)	500
Tread (mm)	50
Swivel Radius (mm)	167
Plate Size (mm)	135 x 110
Hole Centres (mm)	105 x 80/75
Top Plate Thickness (mm)	5
Fork Thickness (mm)	4
To Suit Fixing Bolt (mm)	10

### BIL GROUP LTD

Porte Marsh Road, Calne, Wiltshire, SN11 9BW

Registered in England No: 2603821

VAT Reg: GB572705729

