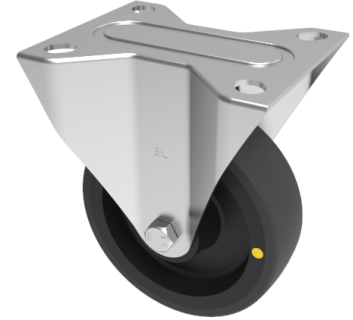


Electrically Conductive Nylon Plate Fixed Castor 125mm 260kg Load

Product code: SSEHF125NYBEC

Grade 304 Pressed stainless steel fixed castor with a top plate fixing fitted with a black electrically conductive nylon wheel with roller bearing. Wheel diameter 125mm, tread width 45mm, overall height 155mm, top plate 105mm x 85mm, hole centres 80mm x 60mm. Load capacity 260kg Conductive offers a resistance $R < 10000 \text{ Ohm}$.



Diameter (mm)	125
Fixing Option	Plate
Castor Type	Fixed
Height (mm)	156
Wheel Material	Nylon
Colour / Shore Hardness	White Nylon
Bearing Type	Roller
Tread (mm)	45
Fork Thickness (mm)	3
To Suit Fixing Bolt (mm)	8
Load Capacity (kg)	260
Temperature Resistance	-30 °C TO +80 °C
Plate Size (mm)	105 x 86
Hole Centres (mm)	80 X 60
Top Plate Thickness (mm)	3

BIL GROUP LTD

Porte Marsh Road, Calne, Wiltshire, SN11 9BW

Registered in England No: 2603821

VAT Reg: GB572705729

