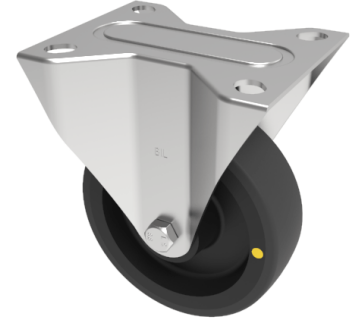


Electrically Conductive Nylon Plate Fixed Castor 150mm 325kg Load

Product code: SSMMF150NYBEC

Grade 304 Pressed stainless steel fixed castor with a top plate fixing fitted with a black electrically conductive nylon wheel with roller bearings . Wheel diameter 150mm, tread width 50mm, overall height 190mm, top plate 135mm x 110mm, hole centres 105 x 80mm. Load capacity 325kg Conductive offers a resistance $R < 10000 \text{ Ohm}$



Diameter (mm)	150
Fixing Option	Plate
Castor Type	Fixed
Height (mm)	190
Wheel Material	Nylon
Colour / Shore Hardness	White Nylon
Bearing Type	Roller
Tread (mm)	50
Fork Thickness (mm)	2
To Suit Fixing Bolt (mm)	8
Load Capacity (kg)	325
Temperature Resistance	-30 °C TO +80 °C
Plate Size (mm)	135 x 110
Hole Centres (mm)	105 x 80
Top Plate Thickness (mm)	3

BIL GROUP LTD

Porte Marsh Road, Calne, Wiltshire, SN11 9BW

Registered in England No: 2603821

VAT Reg: GB572705729

