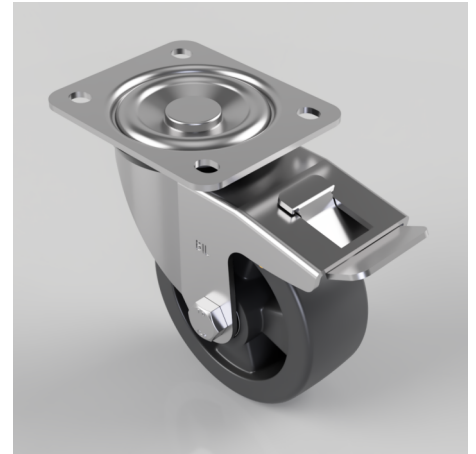


## Electrically Conductive Nylon Plate Swivel Castor Brake 100mm 200kg Load

**Product code: SSEH100NYBEC SWB**

Grade 304 Pressed stainless steel swivel castor with a top plate fixing fitted with a black electrically conductive nylon wheel with roller bearing and a total lock. Wheel diameter 100mm, tread width 40mm, overall height 128mm, top plate 105mm x 85mm, hole centres 80mm x 60mm. Load capacity 200kg Conductive offers a resistance  $R < 10000 \text{ Ohm}$ .



Diameter (mm)	100
Fixing Option	Plate
Castor Type	Swivel with Total Lock Brake
Height (mm)	128
Wheel Material	Nylon
Colour / Shore Hardness	White Nylon
Bearing Type	Roller
Tread (mm)	40
Fork Thickness (mm)	3
To Suit Fixing Bolt (mm)	8
Load Capacity (kg)	200
Temperature Resistance	-30 °C TO +80 °C
Plate Size (mm)	105 x 86
Hole Centres (mm)	80 X 60
Top Plate Thickness (mm)	3
Swivel Radius (mm)	115

### BIL GROUP LTD

Porte Marsh Road, Calne, Wiltshire, SN11 9BW

Registered in England No: 2603821

VAT Reg: GB572705729

