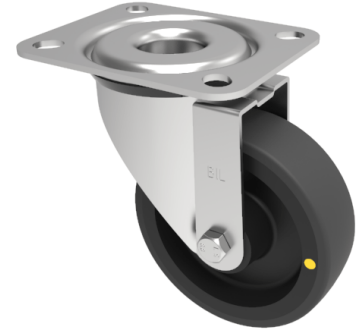


Electrically Conductive Polyurethane Nylon Swivel Castor Plate 160mm 320kg

Product code: SSMM160PNBEC

Grade 304 Pressed stainless steel swivel castor with a top plate fixing fitted with a black electrically conductive polyurethane on nylon wheel with roller bearings . Wheel diameter 160mm, tread width 50mm, overall height 195mm, top plate 135mm x 110mm, hole centres 105 x 80mm. Load capacity 300kg Conductive offers a resistance $R < 10000 \text{ Ohm}$
****MANUFACTURED TO ORDER****



Diameter (mm)	160
Fixing Option	Plate
Castor Type	Swivel
Height (mm)	195
Wheel Material	Polyurethane on Nylon
Colour / Shore Hardness	Black Polyurethane on Nylon Rim / 97 Shore A
Bearing Type	Roller
Tread (mm)	50
Fork Thickness (mm)	2
To Suit Fixing Bolt (mm)	10
Load Capacity (kg)	300
Temperature Resistance	-20 °C TO +80 °C
Plate Size (mm)	135 x 110
Hole Centres (mm)	105 x 80
Top Plate Thickness (mm)	3
Swivel Radius (mm)	133

BIL GROUP LTD

Porte Marsh Road, Calne, Wiltshire, SN11 9BW

Registered in England No: 2603821

VAT Reg: GB572705729

