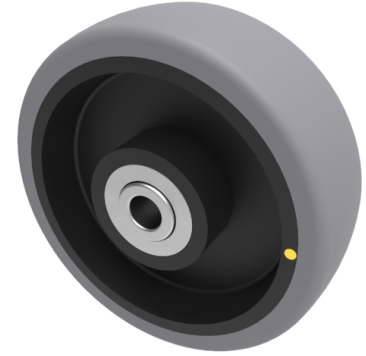


Electrically Conductive Rubber 100mm Ball Bearing Wheel 90kg Load

Product code: BZM100WGRECBJM10

Grey electrical conductive rubber on polypropylene wheel with ball bearing. Wheel diameter 100mm, tread width 32mm, Hub width 36mm, Bore size 10mm. Load capacity 90kg Conductive offers a resistance $R < 10^{10} \Omega$



Wheel Material	Electrically Conductive Rubber
Diameter (mm)	100
Load Capacity (kg)	90
Bearing Type	Ball
Bore Size (mm)	10
Tread (mm)	32
Hub Width (mm)	36
Colour / Shore Hardness	Grey Electrically Conductive Rubber on Nylon Rim / 85 Shore A
Temperature Resistance	-30 °C TO +60 °C

BIL GROUP LTD

Porte Marsh Road, Calne, Wiltshire, SN11 9BW

Registered in England No: 2603821

VAT Reg: GB572705729

