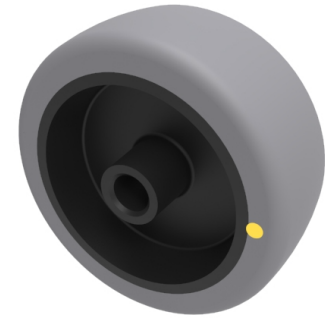


Electrically Conductive Rubber 75mm Plain Bearing Wheel 70kg Load

Product code: BZM75WGREC



Grey electrical conductive rubber on polypropylene wheel with plain bore. Wheel diameter 75mm, tread width 32mm, Hub width 36mm, Bore size 10mm. Load capacity 70kg Conductive offers a resistance $R < 10^{10} \Omega$

Wheel Material	Electrically Conductive Rubber
Diameter (mm)	75
Load Capacity (kg)	70
Bearing Type	Plain
Bore Size (mm)	10
Tread (mm)	32
Hub Width (mm)	36
Colour / Shore Hardness	Grey Electrically Conductive Rubber on Nylon Rim / 85 Shore A
Temperature Resistance	-30 °C TO +60 °C