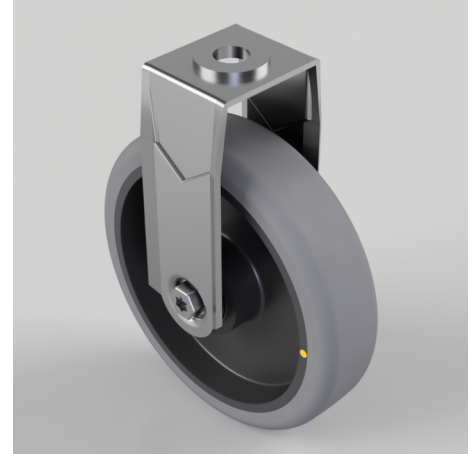


## Electrically Conductive Rubber Bolt Hole Fixed Castor 100mm 70kg Load

**Product code: BZRAF100GRECBJBH10**

Pressed steel fixed castor with a 10mm bolt hole fitted with a grey electrically conductive rubber tyre on polypropylene centred wheel with ball bearing. Wheel diameter 100mm, tread width 24mm, overall height 124mm with a Load capacity 70kg. Conductive offers a resistance  $R < 10 \Omega$  **\*\*MANUFACTURED TO ORDER\*\***



Diameter (mm)	100
Fixing Option	Bolt Hole
Castor Type	Fixed
Head Dia (mm)	21
Height (mm)	124
Bearing Type	Ball
Wheel Material	Electrically Conductive Rubber
Colour / Shore Hardness	Grey Electrically Conductive Rubber on Nylon Rim / 85 Shore A
Fork Thickness (mm)	1.8
Temperature Resistance	-15 °C TO +80 °C
To Suit Fixing Bolt (mm)	10
Tread (mm)	24
Load Capacity (kg)	70

### BIL GROUP LTD

Porte Marsh Road, Calne, Wiltshire, SN11 9BW

Registered in England No: 2603821

VAT Reg: GB572705729

