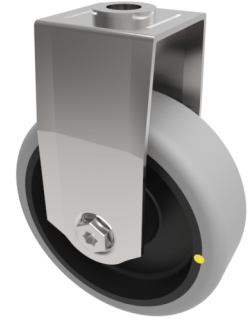


Electrically Conductive Rubber Bolt Hole Fixed Castor 100mm 90kg Load

Product code: BZMF100GRECBH12



Pressed steel fixed castor with a 12mm bolt hole fitted with a grey electrically conductive tyre on a black polypropylene centred wheel with plain bore. Wheel diameter 100mm, tread width 32mm, overall height 132mm, Load capacity 90kg. Conductive offers a resistance $R < 10 \Omega$

Diameter (mm)	100
Fixing Option	Bolt Hole
Castor Type	Fixed
Head Dia (mm)	57
Height (mm)	132
Bearing Type	Plain
Wheel Material	Electrically Conductive Rubber
Colour / Shore Hardness	Grey Electrically Conductive Rubber on Nylon Rim / 85 Shore A
Fork Thickness (mm)	2
Temperature Resistance	-15 °C TO +80 °C
To Suit Fixing Bolt (mm)	12
Tread (mm)	32
Load Capacity (kg)	90