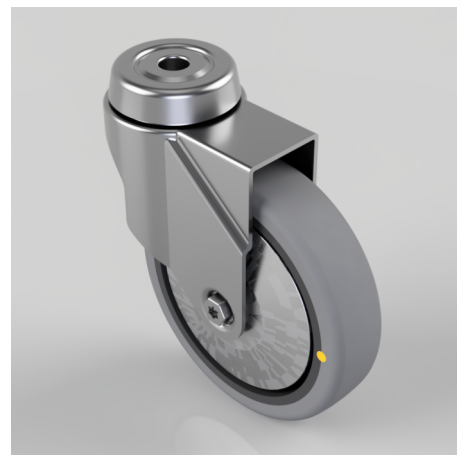


Electrically Conductive Rubber Bolt Hole Swivel Castor 100mm 70kg Load

Product code: BZRA100GRECBH10G

Pressed steel swivel castor with a 10mm bolt hole fitted with a non marking grey electrically conductive rubber wheel on a polypropylene centre and steel thread guard. Wheel diameter 100mm, tread width 24mm, overall height 124mm, Load capacity 70kg. Conductive offers a resistance $R < 10^{10} \Omega$



Diameter (mm)	100
Fixing Option	Bolt Hole
Castor Type	Swivel
Head Dia (mm)	46
Height (mm)	124
Bearing Type	Plain
Swivel Radius (mm)	90
Wheel Material	Electrically Conductive Rubber
Colour / Shore Hardness	Grey Electrically Conductive Rubber on Nylon Rim / 85 Shore A
Fork Thickness (mm)	1.8
Temperature Resistance	-15 °C TO +80 °C
To Suit Fixing Bolt (mm)	10
Tread (mm)	24
Load Capacity (kg)	70

BIL GROUP LTD

Porte Marsh Road, Calne, Wiltshire, SN11 9BW

Registered in England No: 2603821

VAT Reg: GB572705729

