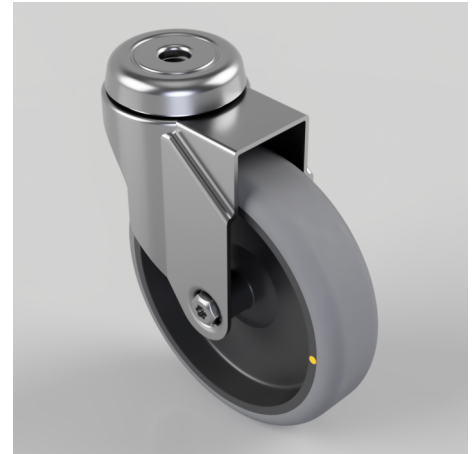


Electrically Conductive Rubber Bolt Hole Swivel Castor 125mm 100kg Load

Product code: BZM125GRECBH12

Pressed steel swivel castor with a 12mm bolt hole fitted with a grey electrically conductive rubber on black polypropylene centred wheel, Wheel diameter 125mm, 32mm tread width, 156mm overall height, with a load capacity of 100kg. Conductive offers a resistance $R < 10 \Omega$



Diameter (mm)	125
Fixing Option	Bolt Hole
Castor Type	Swivel
Head Dia (mm)	57
Height (mm)	156
Bearing Type	Plain
Swivel Radius (mm)	103
Wheel Material	Electrically Conductive Rubber
Colour / Shore Hardness	Grey Electrically Conductive Rubber on Nylon Rim / 85 Shore A
Fork Thickness (mm)	2
Temperature Resistance	-15 °C TO +80 °C
To Suit Fixing Bolt (mm)	12
Tread (mm)	32
Load Capacity (kg)	100