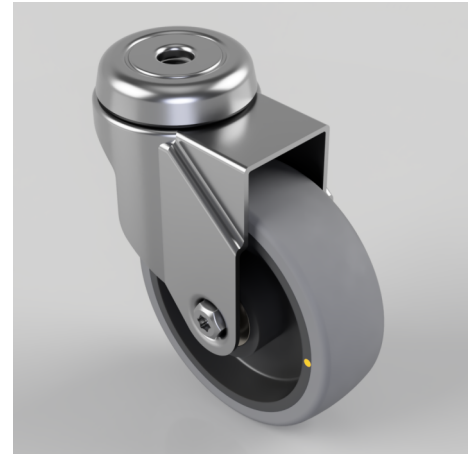


Electrically Conductive Rubber Bolt Hole Swivel Castor 125mm 80kg Load

Product code: BZRA125GRECBH10

Zinc-plated swivel castor with a 10mm bolt hole fitted with a non marking grey electrically conductive rubber wheel on a polypropylene centre. Wheel diameter 125mm, tread width 32mm, overall height 149mm, Load capacity 80kg. Conductive offers a resistance $R < 10 \Omega$



Diameter (mm)	125
Fixing Option	Bolt Hole
Castor Type	Swivel
Head Dia (mm)	46
Height (mm)	149
Bearing Type	Plain
Swivel Radius (mm)	106
Wheel Material	Electrically Conductive Rubber
Colour / Shore Hardness	Grey Electrically Conductive Rubber on Nylon Rim / 85 Shore A
Fork Thickness (mm)	1.8
Temperature Resistance	-15 °C TO +80 °C
To Suit Fixing Bolt (mm)	10
Tread (mm)	24
Load Capacity (kg)	80