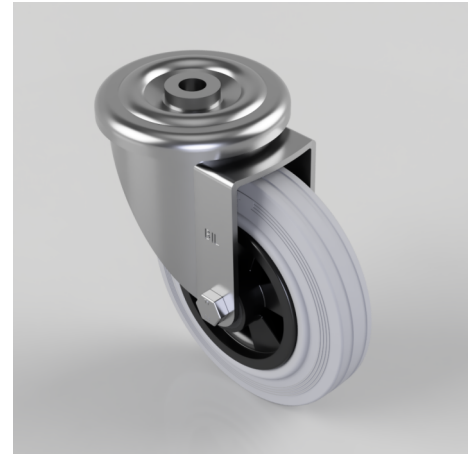


Electrically Conductive Rubber Bolt Hole Swivel Castor 160mm 140kg Load

Product code: BZMM160GRBBH16

Pressed steel swivel castor with a 16mm bolt hole fitted with a grey rubber tyre black polypropylene centred wheel with a roller bearing. Wheel diameter 160mm, tread width 40mm, overall height 193mm, Load capacity 140kg.



Diameter (mm)	160
Castor Type	Swivel
Fixing Option	Bolt Hole
Height (mm)	193
Wheel Material	Rubber on Polypropylene
Colour / Shore Hardness	Grey Rubber on Polypropylene Rim / 85 Shore A
Temperature Resistance	-20 °C TO +60 °C
Bearing Type	Roller
Load Capacity (kg)	140
Tread (mm)	40
Swivel Radius (mm)	133
Head Dia (mm)	114
Fork Thickness (mm)	4
To Suit Fixing Bolt (mm)	16