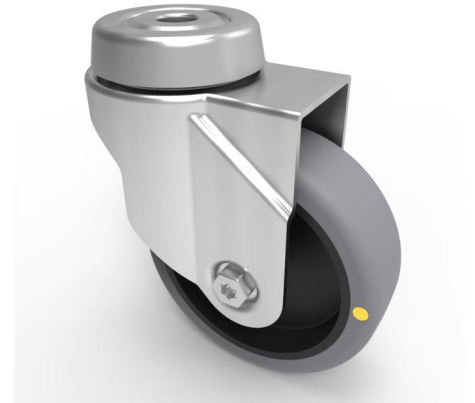


Electrically Conductive Rubber Bolt Hole Swivel Castor 75mm 60kg Load

Product code: BZRA75GRECBH10

Pressed steel swivel castor with a 10mm bolt hole fitted with a grey electrically conductive rubber tyre on polypropylene centred wheel with a plain bore. Wheel diameter 75mm, tread width 24mm, overall height 101mm with a Load capacity 60kg. Conductive offers a resistance $R < 10 \Omega$



Diameter (mm)	75
Fixing Option	Bolt Hole
Castor Type	Swivel
Head Dia (mm)	46
Height (mm)	101
Bearing Type	Plain
Swivel Radius (mm)	65
Wheel Material	Electrically Conductive Rubber
Colour / Shore Hardness	Grey Electrically Conductive Rubber on Nylon Rim / 85 Shore A
Fork Thickness (mm)	1.8
Temperature Resistance	-15 °C TO +80 °C
To Suit Fixing Bolt (mm)	10
Tread (mm)	24
Load Capacity (kg)	60