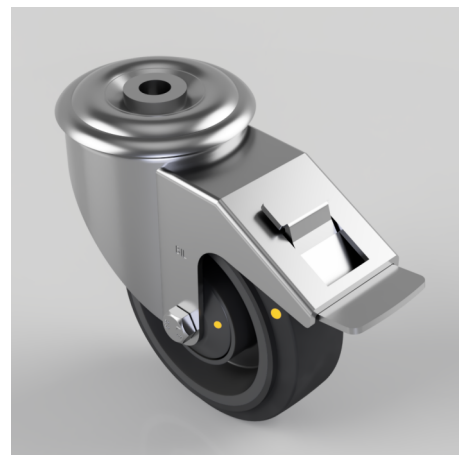


Electrically Conductive Rubber Bolt Hole Swivel Castor Brake 100mm 180kg

Product code: BZMM100RNBJECSBH12SWB

Pressed steel swivel castor with a 12mm bolt hole fitted with a 65 shore A black elastic electrically conductive rubber wheel on a black nylon centre with a ball bearing and a total lock brake. Wheel diameter 100mm, tread width 36mm, overall height 128mm, Load capacity 180kg. Conductivity range is 10^3 ohm to 10^4 ohm



Diameter (mm)	100
Castor Type	Swivel with Total Lock Brake
Fixing Option	Bolt Hole
Height (mm)	128
Wheel Material	Rubber on Nylon
Colour / Shore Hardness	Blue Rubber on Nylon Rim / 75 Shore A
Temperature Resistance	-20 °C TO +60 °C
Bearing Type	Ball
Load Capacity (kg)	180
Tread (mm)	36
Swivel Radius (mm)	119
Head Dia (mm)	76
Fork Thickness (mm)	2.5
To Suit Fixing Bolt (mm)	12

BIL GROUP LTD

Porte Marsh Road, Calne, Wiltshire, SN11 9BW

Registered in England No: 2603821

VAT Reg: GB572705729

