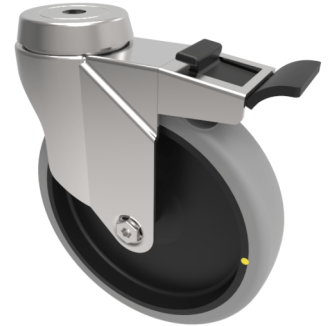


## Electrically Conductive Rubber Bolt Hole Swivel Castor Brake 150mm 100kg

**Product code: BZM150GRECBH12SWB**



Pressed steel swivel castor with a 12mm bolt hole fitted with a grey electrically conductive rubber on grey polypropylene centred wheel and a total lock brake, Wheel diameter 150mm, 32mm tread width, 181mm overall height, with a load capacity of 100kgs. Conductive offers a resistance  $R < 10 \Omega$

**\*\*MANUFACTURED TO ORDER\*\***

Diameter (mm)	150
Fixing Option	Bolt Hole
Castor Type	Swivel with Total Lock Brake
Head Dia (mm)	57
Height (mm)	181
Bearing Type	Plain
Swivel Radius (mm)	120
Wheel Material	Electrically Conductive Rubber
Colour / Shore Hardness	Grey Electrically Conductive Rubber on Nylon Rim / 85 Shore A
Fork Thickness (mm)	2
Temperature Resistance	-15 °C TO +80 °C
To Suit Fixing Bolt (mm)	12
Tread (mm)	32
Load Capacity (kg)	100

### BIL GROUP LTD

Porte Marsh Road, Calne, Wiltshire, SN11 9BW

Registered in England No: 2603821

VAT Reg: GB572705729

