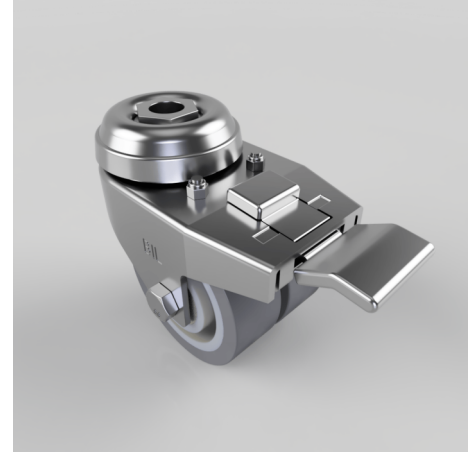


## Electrically Conductive Rubber Bolt Hole Swivel Castor Brake 50mm 55kg

**Product code: 2BZD50VGRBJBH10SWB**

Twin wheeled pressed steel swivel castor with a 10mm bolt hole fixing fitted with 2 thermoplastic grey rubber tyres on 2 grey polypropylene centred wheels with ball bearings and total lock brake. Wheel diameter 50mm, tread width 2 x 18mm, overall height 73mm, Load capacity 55kg.



Diameter (mm)	50
Fixing Option	Bolt Hole
Castor Type	Swivel with Total Lock Brake
Head Dia (mm)	45
Height (mm)	68
Bearing Type	Ball
Swivel Radius (mm)	80
Wheel Material	Rubber on Polypropylene
Colour / Shore Hardness	Grey Rubber on Polypropylene Rim / 87 Shore A
Fork Thickness (mm)	2
Temperature Resistance	-15 °C TO +45 °C
To Suit Fixing Bolt (mm)	10
Tread (mm)	2 x 18
Load Capacity (kg)	60

### BIL GROUP LTD

Porte Marsh Road, Calne, Wiltshire, SN11 9BW

Registered in England No: 2603821

VAT Reg: GB572705729

