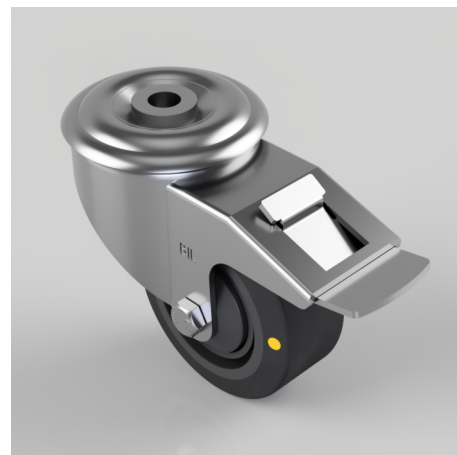


## Electrically Conductive Rubber Bolt Hole Swivel Castor Brake 80mm 150kg

**Product code: BZMM80RNBJECSBH12SWB**

Pressd steel swivel castor with a 12mm bolt hole fixing fitted with a 65 shore A black elastic electrically conductive rubber wheel on a black nylon centre with a ball bearing and total lock brake. Wheel diameter 80mm, tread width 35mm, overall height 105mm, Load capacity 150kg. Conductivity range is  $10^3$  ohm to  $10^4$  ohm



Diameter (mm)	80
Castor Type	Swivel with Total Lock Brake
Fixing Option	Bolt Hole
Height (mm)	105
Wheel Material	Rubber on Nylon
Colour / Shore Hardness	Blue Rubber on Nylon Rim / 75 Shore A
Temperature Resistance	-20 °C TO +60 °C
Bearing Type	Ball
Load Capacity (kg)	150
Tread (mm)	35
Swivel Radius (mm)	112
Head Dia (mm)	76
Fork Thickness (mm)	2.5
To Suit Fixing Bolt (mm)	12

## BIL GROUP LTD

Porte Marsh Road, Calne, Wiltshire, SN11 9BW

Registered in England No: 2603821

VAT Reg: GB572705729

