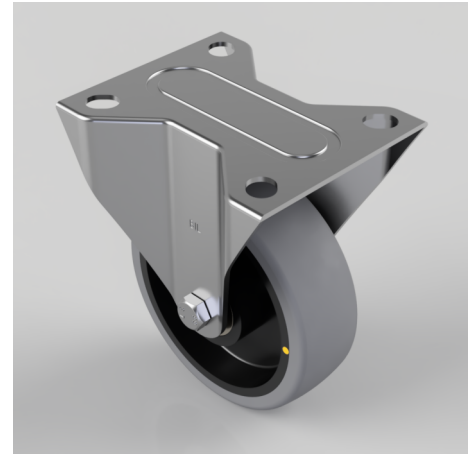


Electrically Conductive Rubber Plate Fixed Castor 100mm 90kg Load

Product code: BZMMF100GRECBJ

Pressed steel fixed castor with a top plate fixing fitted with a non-marking grey electrically conductive rubber wheel on a polypropylene centre with ball bearing. Wheel diameter 100mm, tread width 32mm, overall height 128mm, top plate 105mm x 85mm, hole centres 80mm x 60mm Load capacity 90kg. Conductive offers a resistance $R < 10^{10} \Omega$.



Diameter (mm)	100
Castor Type	Fixed
Fixing Option	Plate
Height (mm)	128
Wheel Material	Electrically Conductive Rubber
Colour / Shore Hardness	Grey Electrically Conductive Rubber on Nylon Rim / 85 Shore A
Temperature Resistance	-15 °C TO +80 °C
Bearing Type	Ball
Load Capacity (kg)	90
Tread (mm)	32
Plate Size (mm)	105 X 85
Hole Centres (mm)	80 X 60
Top Plate Thickness (mm)	2
Fork Thickness (mm)	2
To Suit Fixing Bolt (mm)	8

BIL GROUP LTD

Porte Marsh Road, Calne, Wiltshire, SN11 9BW

Registered in England No: 2603821

VAT Reg: GB572705729

