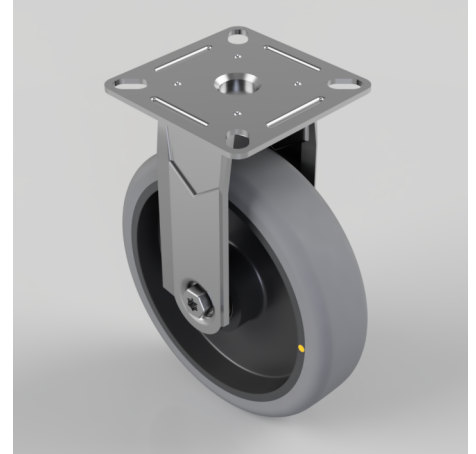


Electrically Conductive Rubber Plate Fixed Castor 100mm 90kg Load

Product code: BZMF100GREC

Pressed steel fixed castor with a top plate fixing fitted with a grey electrically conductive tyre on a black polypropylene centred wheel with plain bore. Wheel diameter 100mm, tread width 32mm, overall height 132mm, top plate 90mm x 70mm, hole centres 75mm x 56mm or 64mm x 44mm. Load capacity 90kg. Conductive offers a resistance $R < 10 \Omega$



| | |
|--------------------------|---|
| Diameter (mm) | 100 |
| Fixing Option | Plate |
| Castor Type | Fixed |
| Plate Size (mm) | 90 x 70 |
| Hole Centres (mm) | 64/75 x 44/56 |
| Height (mm) | 132 |
| Bearing Type | Plain |
| Wheel Material | Electrically Conductive Rubber |
| Colour / Shore Hardness | Grey Electrically Conductive Rubber on Nylon Rim / 85 Shore A |
| Top Plate Thickness (mm) | 2 |
| Fork Thickness (mm) | 2 |
| Temperature Resistance | -15 °C TO +80 °C |
| To Suit Fixing Bolt (mm) | 8 |
| Tread (mm) | 32 |
| Load Capacity (kg) | 90 |

BIL GROUP LTD

Porte Marsh Road, Calne, Wiltshire, SN11 9BW

Registered in England No: 2603821

VAT Reg: GB572705729

