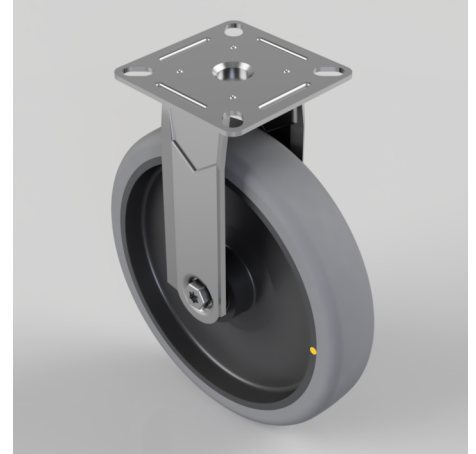


Electrically Conductive Rubber Plate Fixed Castor 125mm 100kg Load

Product code: BZMF125GREC

Pressed steel fixed castor with a top plate fitted with a grey electrically conductive rubber on grey polypropylene centred wheel, Wheel diameter 125mm, 32mm tread width, 156mm overall height, 90mm x 70mm top plate, 75mm x 56mm or 64mm x 44mm bolt holes, with a load capacity of 100kg. Conductive offers a resistance $R < 10 \Omega$



Diameter (mm)	125
Fixing Option	Plate
Castor Type	Fixed
Plate Size (mm)	90 x 70
Hole Centres (mm)	64/75 x 44/56
Height (mm)	156
Bearing Type	Plain
Wheel Material	Electrically Conductive Rubber
Colour / Shore Hardness	Grey Electrically Conductive Rubber on Nylon Rim / 85 Shore A
Top Plate Thickness (mm)	2
Fork Thickness (mm)	2
Temperature Resistance	-15 °C TO +80 °C
To Suit Fixing Bolt (mm)	8
Tread (mm)	32
Load Capacity (kg)	100