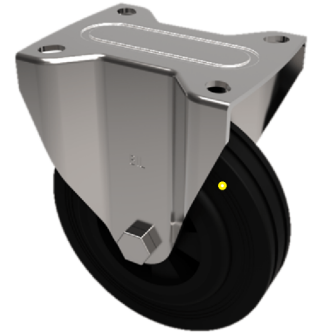


Electrically Conductive Rubber Plate Fixed Castor 125mm 200kg Load

Product code: SSMMF125RNBJEC



Grade 304 Stainless steel fixed castor with a top plate fixing fitted with a 65 shore A black elastic electrically conductive rubber wheel on a black nylon centre with ball bearings (Not stainless steel) . Wheel diameter 125mm, tread width 36mm, overall height 155mm, top plate 105mm x 85mm, hole centres 80mm x 60mm Load capacity 200Kg. Conductivity range is 10^3 ohm to 10^4 ohm

Diameter (mm)	125
Fixing Option	Plate
Castor Type	Fixed
Height (mm)	155
Wheel Material	Rubber on Nylon
Colour / Shore Hardness	Black Elastic Rubber on Nylon Rim / 65 Shore A
Bearing Type	Ball
Tread (mm)	36
Fork Thickness (mm)	2
To Suit Fixing Bolt (mm)	8
Load Capacity (kg)	200
Temperature Resistance	-20 °C TO +60 °C
Plate Size (mm)	105 X 85
Hole Centres (mm)	80 X 60
Top Plate Thickness (mm)	2