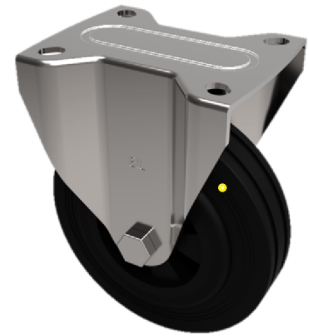


Electrically Conductive Rubber Plate Fixed Castor 125mm 250kg Load

Product code: BZHF125RNBJEC

Pressd steel fixed castor with a top plate fixing fitted with a 65 shore A black elastic electrically conductive rubber wheel on a black nylon centre with a ball bearing. Wheel diameter 125mm, tread width 36mm, overall height 155mm, top plate 105mm x 86mm, hole centres 80mm x 60mm Load capacity 250kg. Conductivity range is 10^3 ohm to 10^4 ohm



Diameter (mm)	125
Castor Type	Fixed
Fixing Option	Plate
Height (mm)	155
Wheel Material	Rubber on Nylon
Colour / Shore Hardness	Blue Rubber on Nylon Rim / 75 Shore A
Temperature Resistance	-20 °C TO +60 °C
Bearing Type	Ball
Load Capacity (kg)	250
Tread (mm)	36
Plate Size (mm)	105 x 86
Hole Centres (mm)	80 X 60
Top Plate Thickness (mm)	4
Fork Thickness (mm)	4
To Suit Fixing Bolt (mm)	8