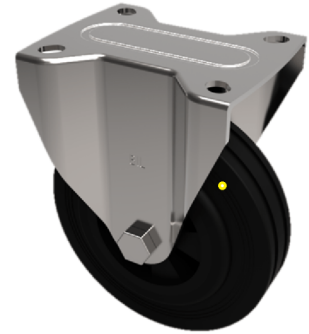


Electrically Conductive Rubber Plate Fixed Castor 150mm 300kg Load

Product code: BZPHFL150RNBJEC

Pressd steel fixed castor with a top plate fixing fitted with a 65 shore A black elastic electrically conductive rubber wheel on a black nylon centre with ball bearings. Wheel diameter 150mm, tread width 40mm, overall height 190mm, top plate 105mm x 92mm, hole centres 80mm x 60mm Load capacity 300kg. Conductivity range is 10^3 ohm to 10^4 ohm



Diameter (mm)	150
Castor Type	Fixed
Fixing Option	Plate
Height (mm)	190
Wheel Material	Rubber on Nylon
Colour / Shore Hardness	Blue Rubber on Nylon Rim / 75 Shore A
Temperature Resistance	-20 °C TO +60 °C
Bearing Type	Ball
Load Capacity (kg)	300
Tread (mm)	40
Plate Size (mm)	105 x 92
Hole Centres (mm)	80 X 60
Top Plate Thickness (mm)	4
Fork Thickness (mm)	3.5
To Suit Fixing Bolt (mm)	10