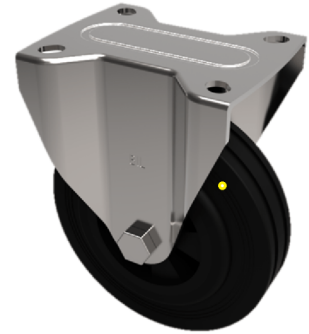


## Electrically Conductive Rubber Plate Fixed Castor 200mm 450kg Load

**Product code: BZPHF200RNBJEC**

Pressed steel fixed castor with a top plate fixing fitted with a 65 shore A black elastic electrically conductive rubber tyre on black nylon centred wheel with ball bearings. Wheel diameter 200mm, tread width 50mm, overall height 238mm, plate size 135mm x 110mm, hole centres 105mm x 80/75mm. Load capacity 450kg. Conductivity range is  $10^3$  ohm to  $10^4$  ohm



Diameter (mm)	200
Castor Type	Fixed
Fixing Option	Plate
Height (mm)	238
Wheel Material	Rubber on Nylon
Colour / Shore Hardness	Blue Rubber on Nylon Rim / 75 Shore A
Temperature Resistance	-20 °C TO +60 °C
Bearing Type	Ball
Load Capacity (kg)	450
Tread (mm)	50
Plate Size (mm)	135 x 115
Hole Centres (mm)	105 x 80/75
Top Plate Thickness (mm)	4
Fork Thickness (mm)	4
To Suit Fixing Bolt (mm)	10