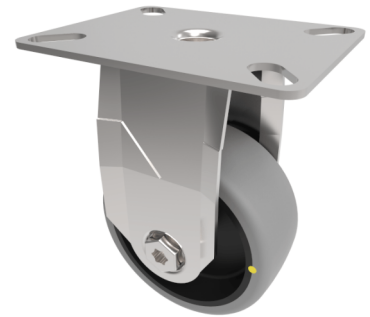


Electrically Conductive Rubber Plate Fixed Castor 75mm 70kg Load

Product code: BZMF75GRECBJ

Pressed steel fixed castor with a top plate fixing fitted with a grey electrically conductive tyre on a black polypropylene centred wheel with ball bearing. Wheel diameter 75mm, tread width 32mm, overall height 109mm, top plate 90mm x 70mm, hole centres 75mm x 56mm or 64mm x 44mm. Load capacity 70kg. Conductive offers a resistance $R < 10 \Omega$

****MANUFACTURED TO ORDER****



Diameter (mm)	75
Fixing Option	Plate
Castor Type	Fixed
Plate Size (mm)	90 x 70
Hole Centres (mm)	64/75 x 44/56
Height (mm)	109
Bearing Type	Ball
Wheel Material	Electrically Conductive Rubber
Colour / Shore Hardness	Grey Electrically Conductive Rubber on Nylon Rim / 85 Shore A
Top Plate Thickness (mm)	2
Fork Thickness (mm)	2
Temperature Resistance	-15 °C TO +80 °C
To Suit Fixing Bolt (mm)	8
Tread (mm)	32
Load Capacity (kg)	70