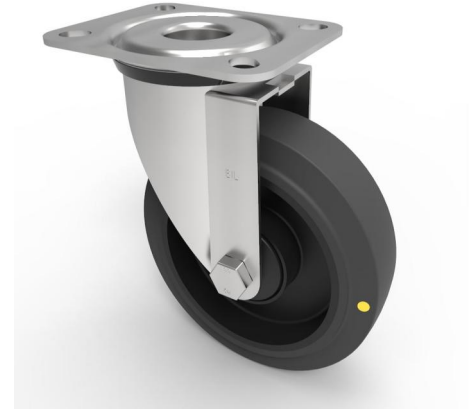


## Electrically Conductive Rubber Plate Swivel Castor 125mm 200kg Load

**Product code: BZMM125RNBJEC**

Pressd steel swivel castor with a top plate fixing fitted with a 65 shore A black elastic electrically conductive rubber wheel on a black nylon centre with a ball bearing. Wheel diameter 125mm, tread width 36mm, overall height 156mm, top plate 105mm x 85mm, hole centres 80mm x 60mm Load capacity 200kg. Conductivity range is  $10^3$  ohm to  $10^4$  ohm



Diameter (mm)	125
Castor Type	Swivel
Fixing Option	Plate
Height (mm)	155
Wheel Material	Rubber on Nylon
Colour / Shore Hardness	Blue Rubber on Nylon Rim / 75 Shore A
Temperature Resistance	-20 °C TO +60 °C
Bearing Type	Ball
Load Capacity (kg)	200
Tread (mm)	36
Swivel Radius (mm)	107
Plate Size (mm)	105 X 85
Hole Centres (mm)	80 X 60
Top Plate Thickness (mm)	2
Fork Thickness (mm)	2
To Suit Fixing Bolt (mm)	8

### BIL GROUP LTD

Porte Marsh Road, Calne, Wiltshire, SN11 9BW

Registered in England No: 2603821

VAT Reg: GB572705729

