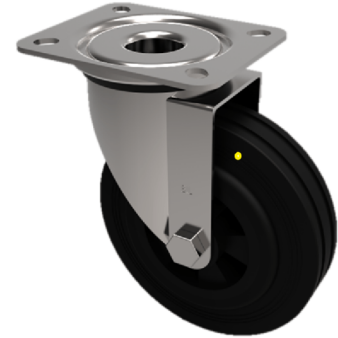


Electrically Conductive Rubber Plate Swivel Castor 150mm 300kg Load

Product code: SSMM150RNBJEC



Stainless steel grade 304 swivel castor with a top plate fixing fitted with a 65 shore A black elastic electrically conductive rubber wheel on a black nylon centre with stainless steel ball bearings. Wheel diameter 150mm, tread width 40mm, overall height 190mm, top plate 135mm x 110mm, hole centres 105mm x 80mm Load capacity 300kg. Conductivity range is 10^3 ohm to 10^4 ohm

Diameter (mm)	150
Fixing Option	Plate
Castor Type	Swivel
Height (mm)	190
Wheel Material	Rubber on Nylon
Colour / Shore Hardness	Black Elastic Rubber on Nylon Rim / 65 Shore A
Bearing Type	Ball
Tread (mm)	40
Fork Thickness (mm)	3
To Suit Fixing Bolt (mm)	10
Load Capacity (kg)	300
Temperature Resistance	-20 °C TO +60 °C
Plate Size (mm)	135 x 110
Hole Centres (mm)	105 x 80
Top Plate Thickness (mm)	3
Swivel Radius (mm)	128

BIL GROUP LTD

Porte Marsh Road, Calne, Wiltshire, SN11 9BW

Registered in England No: 2603821

VAT Reg: GB572705729

