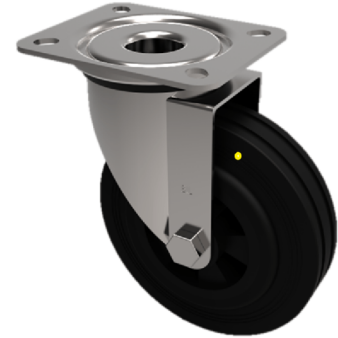


## Electrically Conductive Rubber Plate Swivel Castor 160mm 350kg Load

**Product code: SSMM160RNBJEC**



Stainless steel grade 304 swivel castor with a top plate fixing fitted with a 65 shore A black elastic electrically conductive rubber wheel on a black nylon centre with stainless steel ball bearings. Wheel diameter 160mm, tread width 50mm, overall height 195mm, top plate 135mm x 110mm, hole centres 105mm x 80mm Load capacity 350kg. Conductivity range is  $10^3$  ohm to  $10^4$  ohm

Diameter (mm)	160
Fixing Option	Plate
Castor Type	Swivel
Height (mm)	195
Wheel Material	Rubber on Nylon
Colour / Shore Hardness	Black Elastic Rubber on Nylon Rim / 65 Shore A
Bearing Type	Ball
Tread (mm)	50
Fork Thickness (mm)	2
To Suit Fixing Bolt (mm)	10
Load Capacity (kg)	350
Temperature Resistance	-20 °C TO +60 °C
Plate Size (mm)	135 x 110
Hole Centres (mm)	105 x 80
Top Plate Thickness (mm)	3
Swivel Radius (mm)	133

### BIL GROUP LTD

Porte Marsh Road, Calne, Wiltshire, SN11 9BW

Registered in England No: 2603821

VAT Reg: GB572705729

